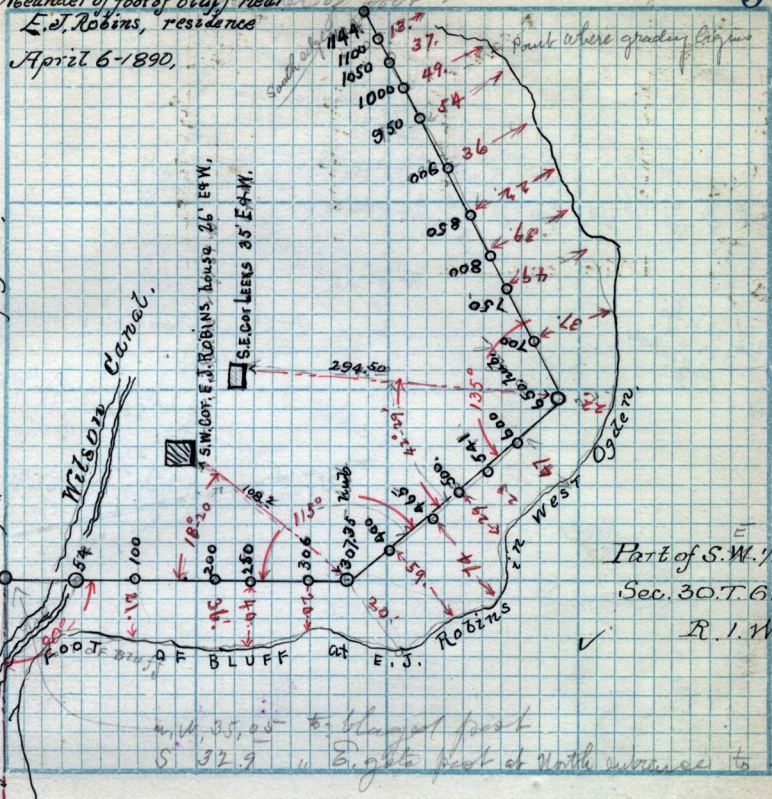


Meander of foot of bluff near E.J. Robins, residence

April 6-1890.

99°36' Road Running N.W. to Robins See page 83 center of



Part of S.W. 1/4 Sec. 30 T. 6. N. R. 1. W.

N.W. 35.00 to bluff at foot  
S 32.9 " E. eight feet of north entrance to bridge

Scale: ..... Chains per inch.

Survey of Lots 2-3 in B. 11. Plat "A" Ogden City Survey. D.H. Peery, died recorded G-64-65-  
 Deed from H.V. Shurtliff to D.H. Peery, July 12-1872 - G-509-  
 Part of Lot 10 in B 10 - Plat "A" Ogden City Survey. Berg. N.E. cor. said Lot  
 S 14 Rods. W 8 Rods N. 14 Rods E 8 Rods to Crq.  
 John C. Thompson to D.H. Peery, G-30-31 - Lot 2 in B-10 - Plat "A"